



Zephyr Cronulla

[Knox Developments with Terra Ferma / EMK Architects](#) | [Architecture - Proposed - Multi Residence](#)

[Website](#)

[Instagram](#)

[LinkedIn](#)



Project Overview

Characterised by an exquisite connection to the water, through sweeping curves of the facade reminiscent of the rolling waves touching the footsteps of the site, this luxury boutique beachfront residence offers five boutique apartments.

Project Commissioner

[Knox Developments with Terra Ferma](#)

Project Creator

[EMK Architects](#)

Team

Knox Developments partnered with Terra Ferma to bring you Zephyr -designed by EMK Architects.

Project Brief

A uniquely shaped building that blends with the beach, this development exists as an extension of the landscape. Each apartment features coral and coastal finishes, enjoys expansive sea views from dusk till dawn, curved balconies, a spacious walk-in wardrobe, an ensuite to every bedroom, fireplace, kitchen with butler's pantry, a bar, a second living space perfect for soaking in the afternoon sun, and complete privacy from all surrounding neighbours.

Project Innovation/Need

Nestled on the water's edge and surrounded by panoramic ocean views, The Esplanade will truly become a benchmark project for Cronulla. Comprising just five boutique apartments, our proposal is characterised by an exquisite connection to the water - through the sweeping curves of the façade - reminiscent of the rolling waves touching the footsteps of the site. The interiors will echo the curvilinear facade to seamlessly reference the natural environment. Neutral and natural finishes will create relaxed ocean side interiors with a calming reference to the outdoors, where the view will take centre stage.

Design Challenge

The building form is directly influenced by the desire to create a deep connection with nature and water. Our proposal is to peel the building away to offer from all bedrooms and living rooms. We strongly feel that a building which capitalises on maximising views from as many rooms as possible, will not only prove beneficial commercially, but also stay true to the concept of being connected with the water and immediate locale.

Sustainability

The building has been specifically designed to capture northern sunlight, with multiple living rooms in each apartment which track the sun as it moves around the site. All single floor apartments allow for natural cross ventilation through all rooms given dual orientation of the building.

Architecture - Proposed - Multi Residence

This award celebrates the design process and product of planning, designing and constructing form, space and ambience that reflect functional, technical, social, and aesthetic considerations. Consideration given for material selection, technology, light and shadow. The project can be a concept, tender or personal project, i.e. proposed space.

[More Details](#)

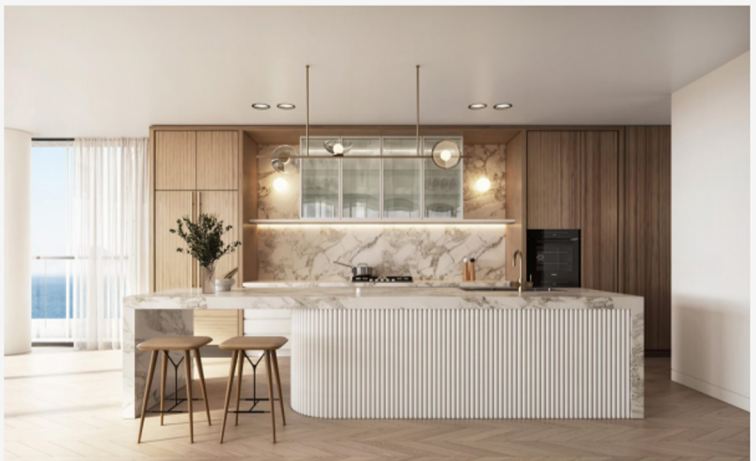


Image Credit : EMK Architects